

# Dogwood



*Designed and pieced by Rose Sheifer, quilted by Darla Padilla*



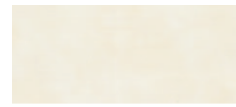
White print



Blue



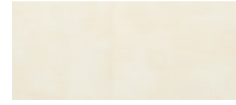
Black print



Pale yellow



Red



**Finished size:** 68½" × 68½" | **Block size (unfinished):** 16½" × 16½"

**Tablecloth motif size (cut):** 12½" × 12½"

The sashing and borders frame the tablecloth motifs to create this sophisticated design. Make it bold and graphic or soft and sophisticated—whatever matches the style of your tablecloth.

## FABRIC REQUIREMENTS

*Based on 42" fabric width.*

**Tablecloth motifs:** 9 squares  
12½" × 12½" for blocks (A)

**White print:** 2 yards for block frames and lengthwise-cut outer border (1⅔ yards for crosswise-cut and pieced border)

**Blue:** ⅝ yard for block frames

**Black print:** 1 yard for sashing and outer border corners

**Pale yellow:** 2 yards for sashing and lengthwise-cut inner border (¾ yard for crosswise-cut and pieced border)

**Red:** ⅝ yard for binding

**Backing:** 73" × 73"

**Batting:** 73" × 73"

## CUTTING

### White print

Cut the border strips first on the lengthwise grain.

Cut 4 lengthwise strips 4½" × 60½" for the outer border (O and P).

### From the remainder:

Cut 18 strips 2" × 12½" (B).

Cut 18 strips 2" × 15½" (C).

### Blue

Cut 18 strips 1" × fabric width; subcut into:

18 strips 1" × 15½" (D) and

18 strips 1" × 16½" (E).

### Black print

Cut 5 strips 2½" × fabric width; subcut into:

16 strips 2½" × 5½" (F) and

4 strips 2½" × 12½" (H).

Cut 5 strips 3½" × fabric width; subcut into:

4 strips 3½" × 5½" (I),

8 strips 3½" × 12½" (K), and

4 strips 3½" × 8½" (L).

Cut 4 squares 4½" × 4½" (Q).

### Pale yellow

Cut the border strips first on the lengthwise grain.

Cut 2 lengthwise strips 1½" × 58½" for the inner border (M).

Cut 2 lengthwise strips 1½" × 60½" for the inner border (N).

### From the remainder:

Cut 3 strips 2½" × fabric width (approximately 36"); subcut into:

12 strips 2½" × 6½" (G).

Cut 3 strips 3½" × fabric width; subcut into:

12 strips 3½" × 6½" (J).

### Red

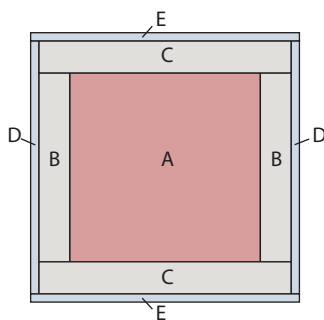
Cut 8 strips 2¼" × fabric width for the binding.



## Blocks

Use  $\frac{1}{4}$ " seam allowances.

1. Sew B strips to each side of an A square. Press.
2. Sew C strips to the top and bottom edges of A. Press.
3. Sew D strips to each side of the block. Press.
4. Sew E strips to the top and bottom edges of the block. Press.



Sew frame strips to block.

5. Repeat Steps 1–4 to make 9 blocks.

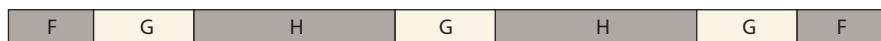
## Construction

1. Sew together F/G/F to construct a  $2\frac{1}{2}$ " vertical sashing unit. Press. Make 6.



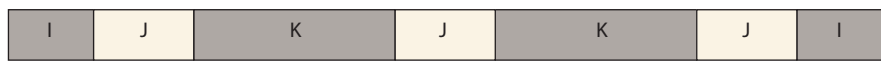
$2\frac{1}{2}$ " vertical sashing units  
Make 6.

2. Sew the blocks into rows with the  $2\frac{1}{2}$ " vertical sashing units between the blocks. Press.
3. Sew together F/G/H/G/H/G/F to construct a  $2\frac{1}{2}$ " horizontal sashing strip. Press. Make 2.



$2\frac{1}{2}$ " horizontal sashing  
Make 2.

4. Sew the rows together with the  $2\frac{1}{2}$ " horizontal sashing strips between the rows. Press.
5. Sew together I/J/K/J/K/J/I to construct a  $3\frac{1}{2}$ " horizontal pieced border. Press. Make 2.



$3\frac{1}{2}$ " pieced border  
Make 2.

6. Sew the  $3\frac{1}{2}$ " horizontal pieced borders to the top and bottom edges of the quilt top. Press.





**7.** Sew together L/J/K/J/K/J/L to construct a  $3\frac{1}{2}$ " vertical pieced border. Press. Make 2.



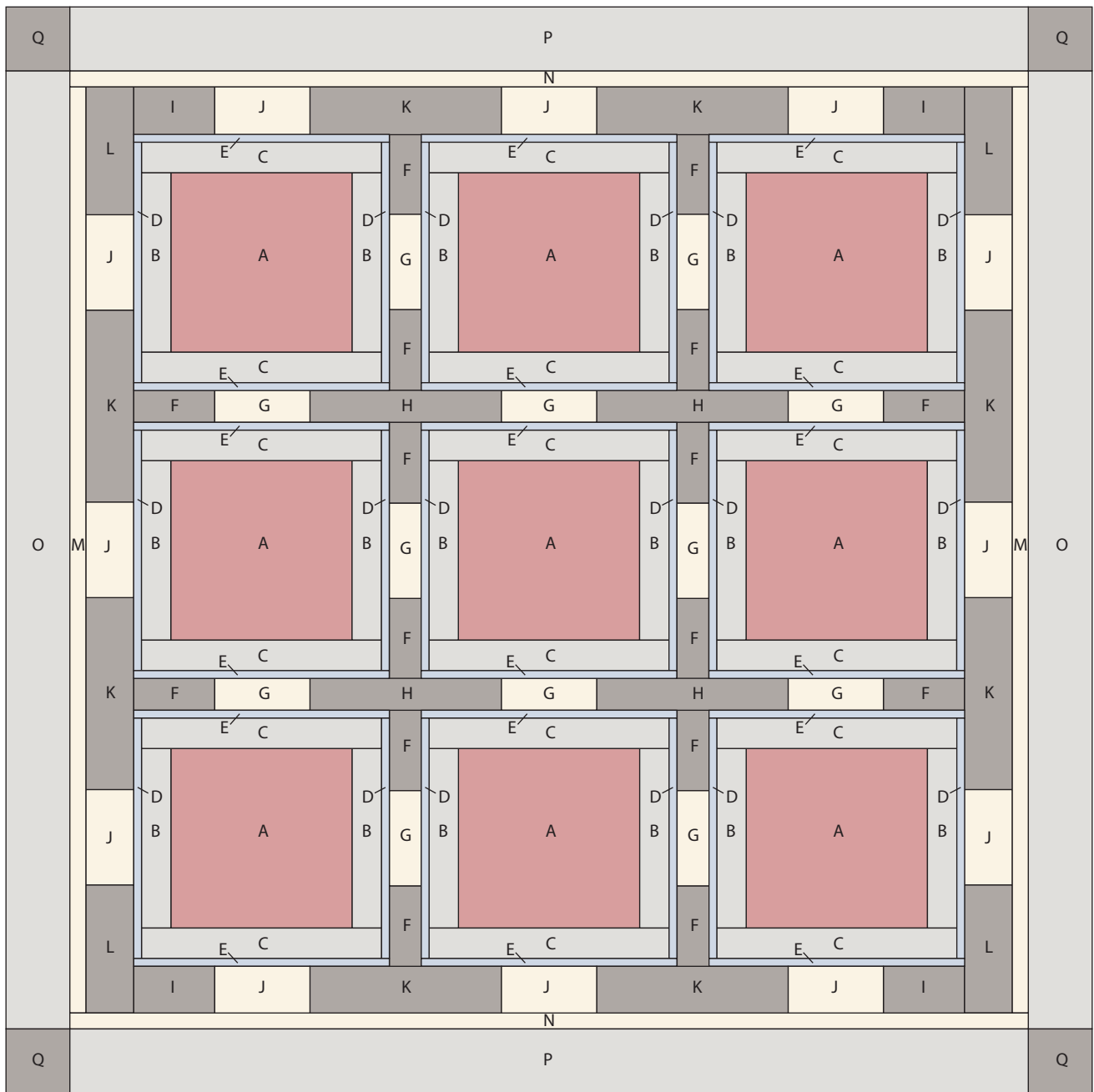
$3\frac{1}{2}$ " pieced border  
Make 2.

**8.** Sew the  $3\frac{1}{2}$ " pieced borders to the sides of the quilt top. Press.

## Borders

- 1.** Add an M strip to each side of the quilt top. Press.
- 2.** Add N strips to the top and bottom edges of the quilt top. Press.
- 3.** Add an O strip to each side of the quilt top. Press.
- 4.** Sew a Q square to each end of a P strip. Press. Make 2.
- 5.** Add Q/P/Q strips to the top and bottom edges of the quilt top. Press.





Quilt construction

## Finishing

Layer, baste, quilt, bind, and label your quilt.

