

Schoolhouse Block

Materials

A fat quarter measures approximately 18" x 20". Avoid one-way prints.

Fat quarter of white solid or white-on-white print

Fat quarter of red solid or tone-on-tone print

Cutting

Cut measurements include 1/4" seam allowance.

White-on-white print:

Cut 1 piece F.* see fig. 9

Cut 2 pieces, 3 1/4" x 4 3/4" (D).**

Cut 2 pieces, 2 1/2" x 3" (A).

Cut 1 piece, 2 1/2" x 5 1/2" (C).

Cut 1 piece, 2 1/2" x 5" (M).

Cut 2 pieces, 1 3/4" x 3 1/2" (I).

Cut 1 piece, 1 1/2" x 6 1/2" (L).

Cut 1 piece, 1 1/2" x 7" (P).

Red tone-on-tone print:

Cut 1 piece E. * see fig. 8

Cut 1 piece, 4 3/8" x 5 7/8" (G).

Cut 1 piece, 2 1/2" x 5 1/2" (O).

Cut 1 piece, 2" x 3 1/2" (H).

Cut 2 pieces, 2" x 5" (N).

Cut 2 pieces, 1 3/4" x 4 1/2" (J).

Cut 2 pieces, 1 1/2" x 2 1/2" (B).

Cut 2 pieces, 1 1/2" x 6" (K).

* Use the pattern provided to cut this piece.

**If your fabric is the same on both sides, you only need to cut 1 piece.

Block Assembly

Press seams in the direction shown by the arrows.

1. Arrange 2 of white Piece A, 2 of red Piece B, and white piece C as shown in **fig. 1**. Sew the pieces together to make a row. Press.

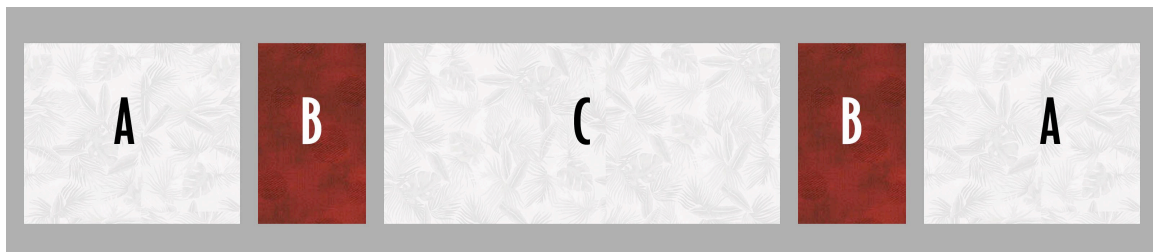


fig. 1

2. Cut each white Piece D from corner to corner on the diagonal as shown in **fig 2a**. Make 1 each. (You will use one triangle from each pair; discard the triangle marked with the "x".) Fold red Piece G in half across the $5 \frac{7}{8}$ " width. Press lightly. Use your rotary cutter to make a cut from the crease at the top to the corner of the piece. Repeat to cut from the crease at the top to the other corner as shown in **fig 2b**.

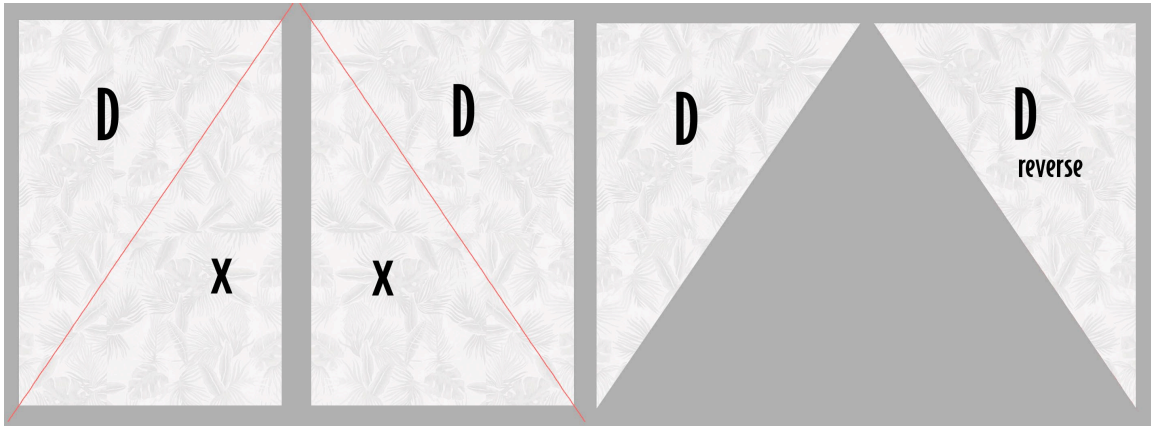


fig. 2a

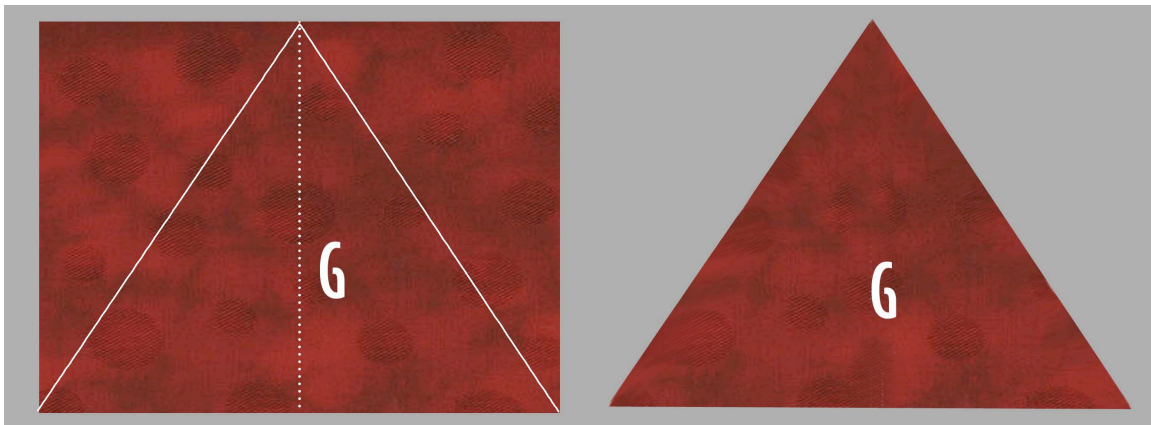


fig. 2b

3. Arrange 1 each of white Piece D and D reverse, red Piece E, white Piece F, and red Piece G as shown in **fig. 3**. Sew the pieces together to make a row. Press.



fig. 3

4. Arrange red Piece H, 2 of white Piece I, 2 of red Piece J, 2 of red Piece K, and white Piece L as shown in **fig. 4**. Sew a white Piece I to opposite sides of red piece H. Press. Sew a red Piece J to the top and bottom of the unit. Press. Sew a red Piece K to opposites sides of the unit. Press. Sew the white Piece L to the top. Press.

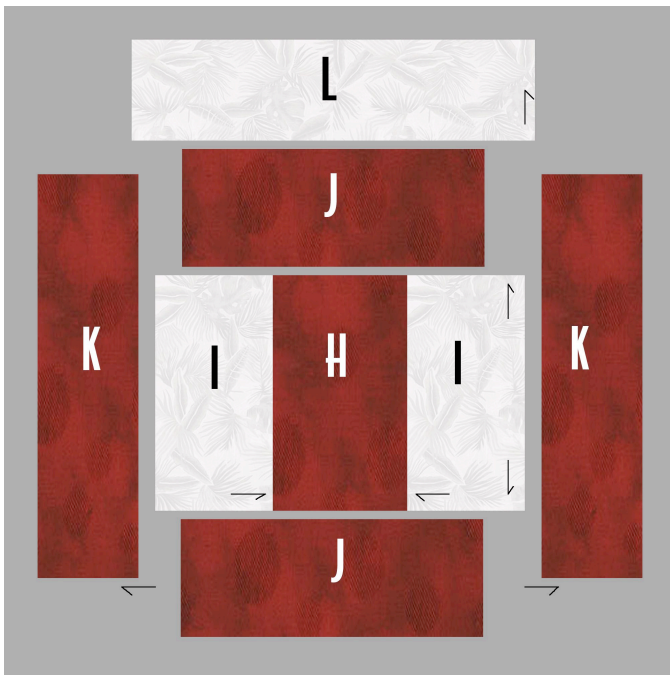


fig. 4

5. Arrange white Piece M, 2 of red Piece N, red Piece O, and white Piece P as shown in **fig. 5**. Sew a red Piece N to opposite sides of white Piece M. Press. Sew red Piece O to the top of the unit. Press. Sew white Piece P to the left side of the unit. Press.

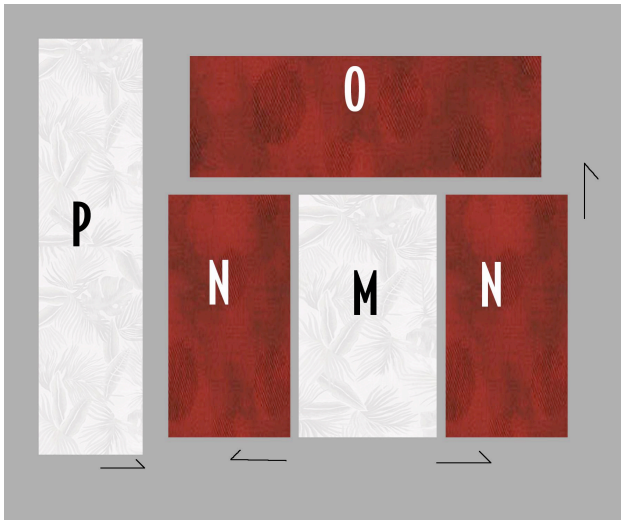


fig. 5

6. Sew the units from Steps 4 and 5 together as shown in **fig. 6**. Press.

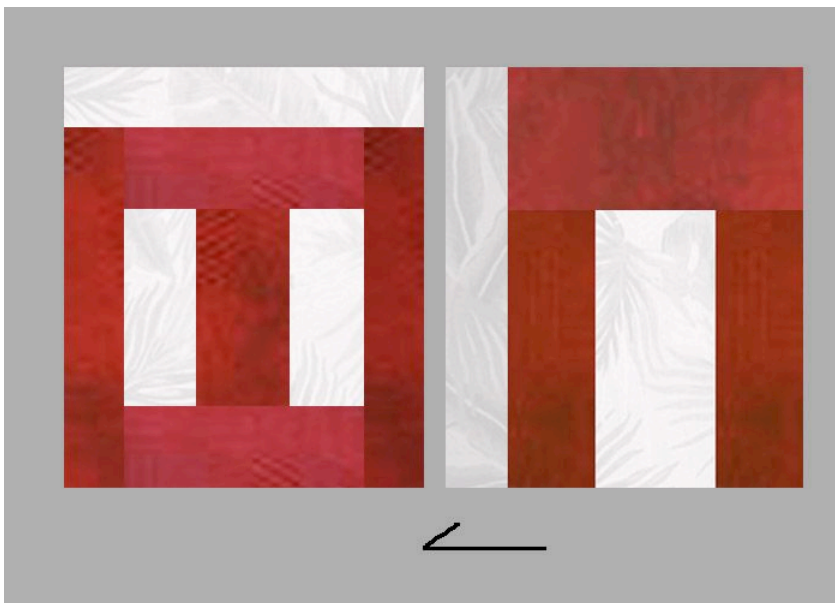


fig. 6

7. Arrange the rows from Steps 1, 3, and 6 as shown in **fig. 7**. Sew the rows together. Press.

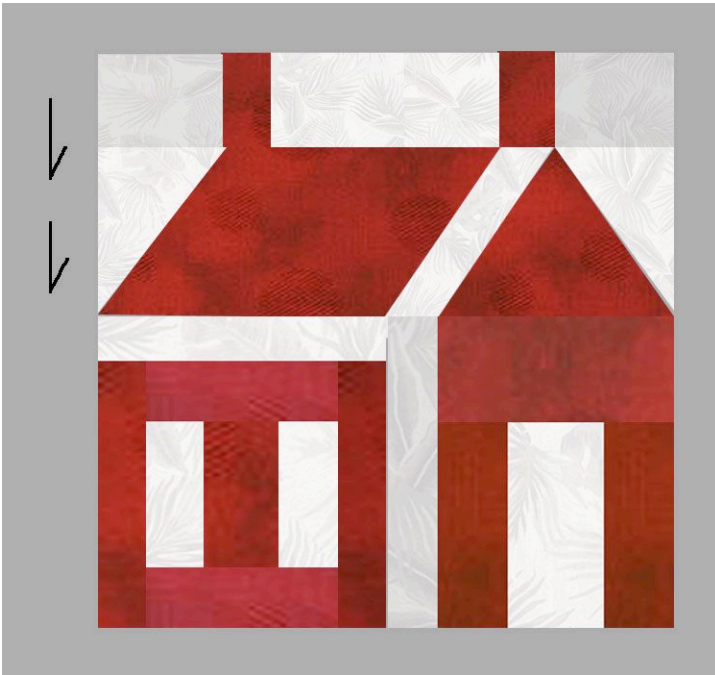


fig. 7

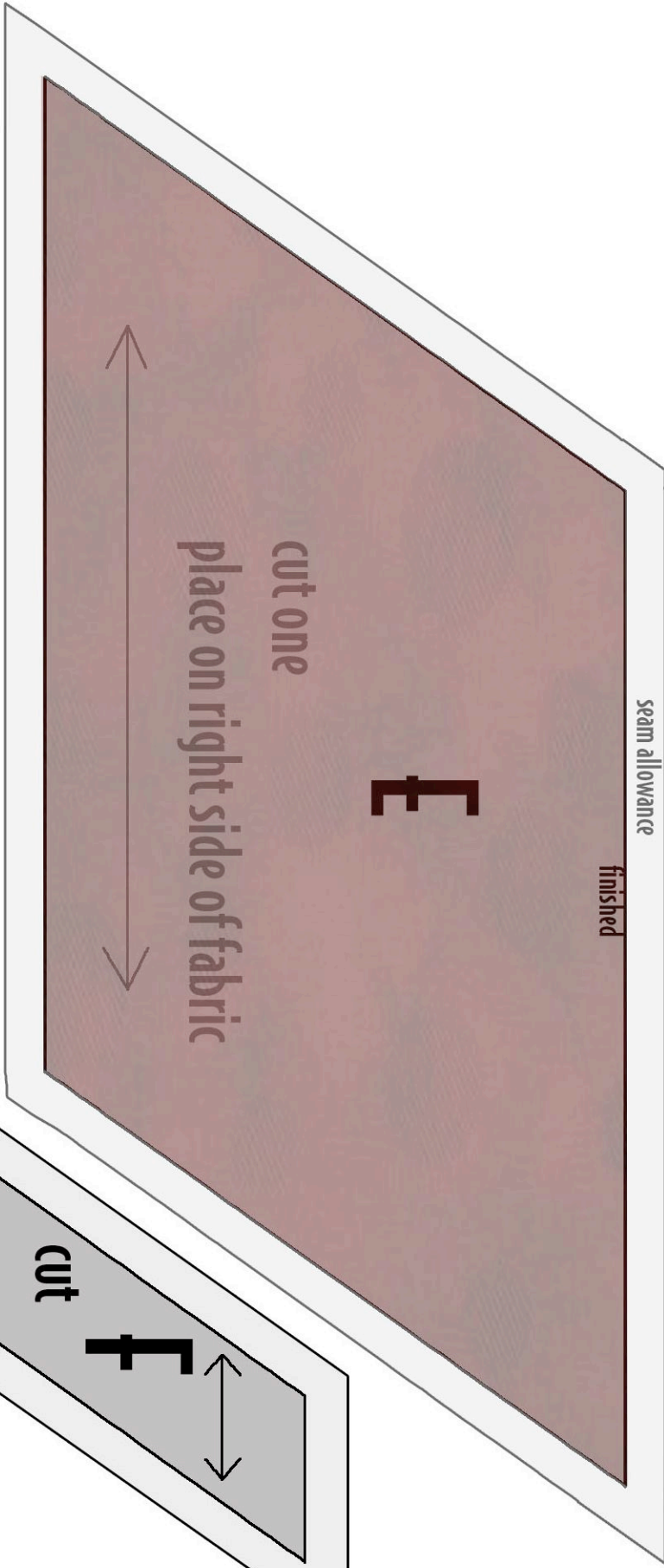


fig. 8

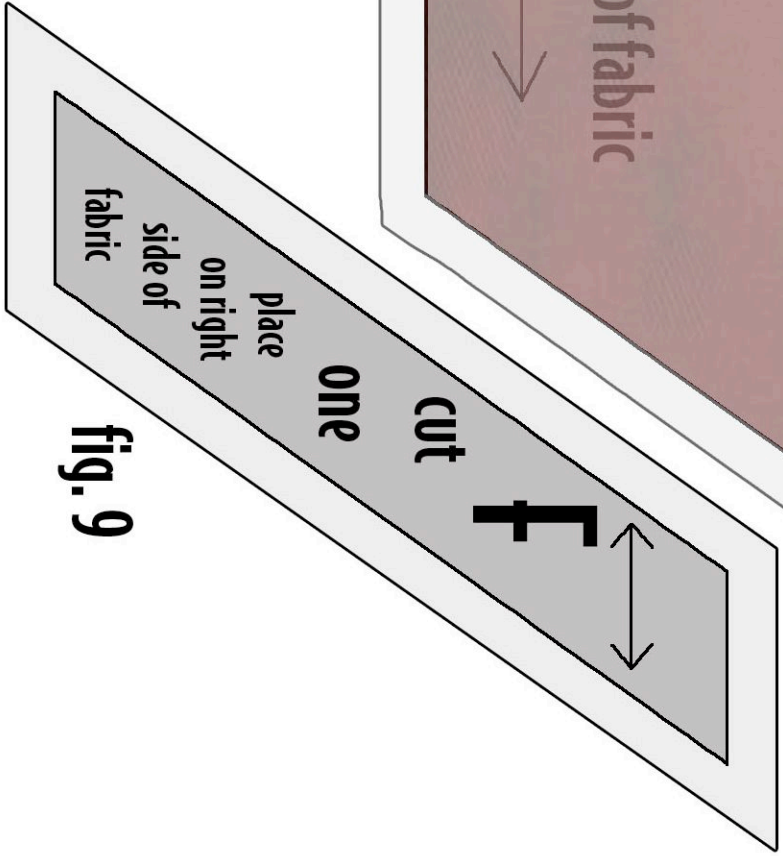


fig. 9